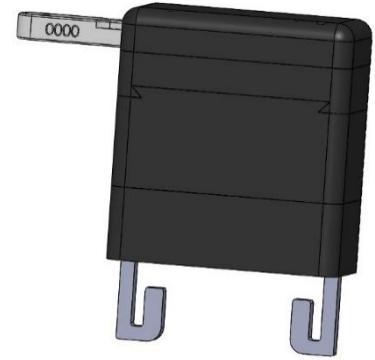


## Mounting Instruction

### OBD-Saver

### Porsche



#### Description :

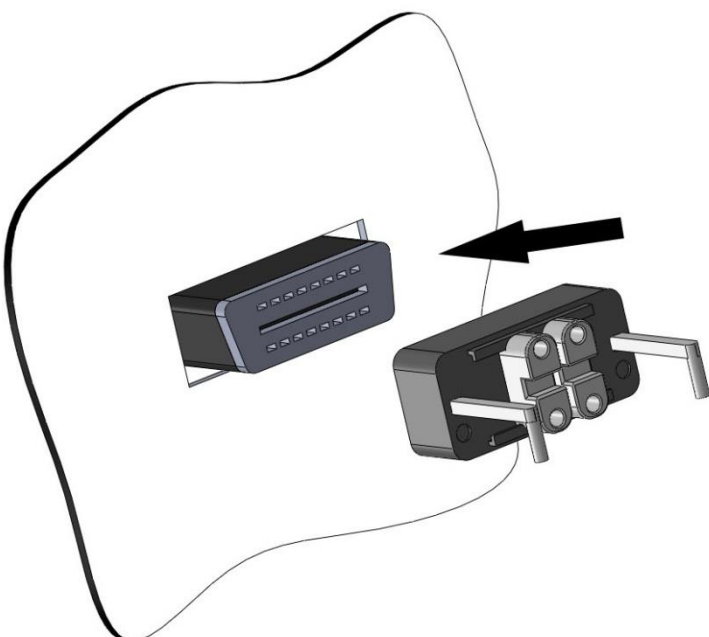
The OBD Saver disables effectively every access to ECUs via OBD – Interface (e.g. electronic immobilizer). The OBD – interface is locked with the OBD Saver. Thus connecting any device to the OBD interface is impossible and the connection to the car their fore denied.

When locked by the OBD Saver your car is protected very effectively. The control unit which controls the ignition of your car cannot be deactivated via OBD. From this time on your car will only start with the original ignition keys!

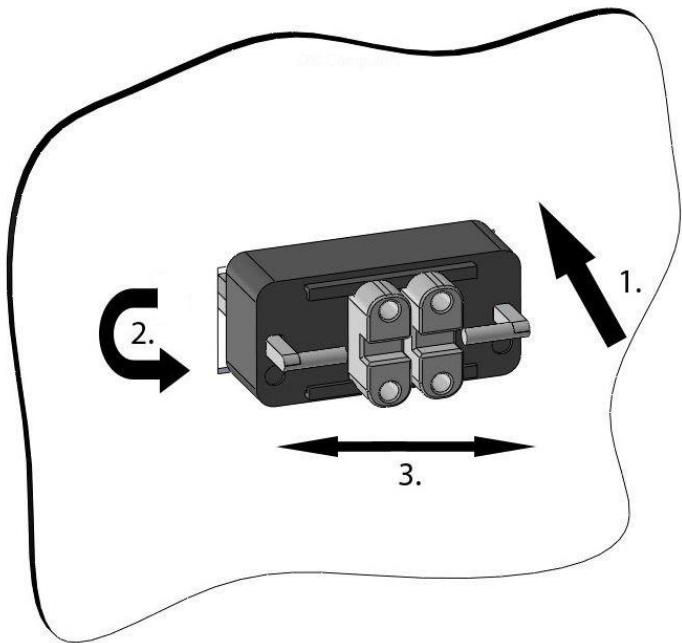
#### Scope of delivery :

- 1x OBD-Saver enclosure including the lock
- 2x keys
- 1x allen wrench 2,5
- 2x allen srew M3 + 1x spare screw
- 2x window sticker

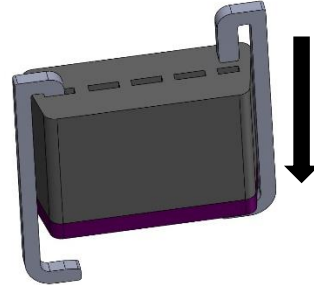
#### Mounting :



- put the lower lock part onto the OBD socket jack (mounting is possible only in one specific position!)

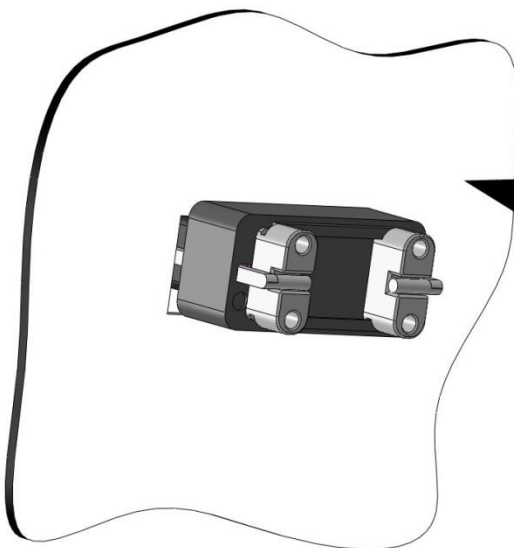


1. push both hooks entirely into the OBD socket jack
2. turn the hooks towards the OBD socket jack and make shure that they are central\*.

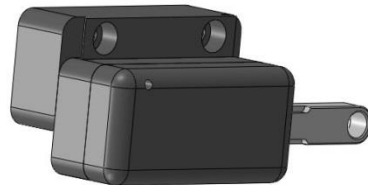


Pull the hooks into the holes of the OBD socket jack

3. push the brackets under the hooks

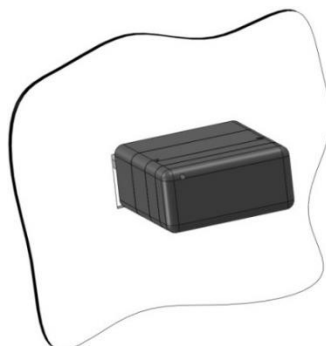


- put the upper lock part onto the mounted lower part (works in both directions)



- mount both allen screws (2x) M3 and turn them on hand-tight
- close the OBD lock and remove the key

➤ dismounting: in reverse sequence. Please note that the hooks have to point in the notch direction!



\* Turning the hooks should be possible without great drag. For the first time of installation u might want to use a small pair of tongs for support (use extreme caution!). Please make sure that no cable on the back is broken during this process. We assume no liability for any kind of damage!

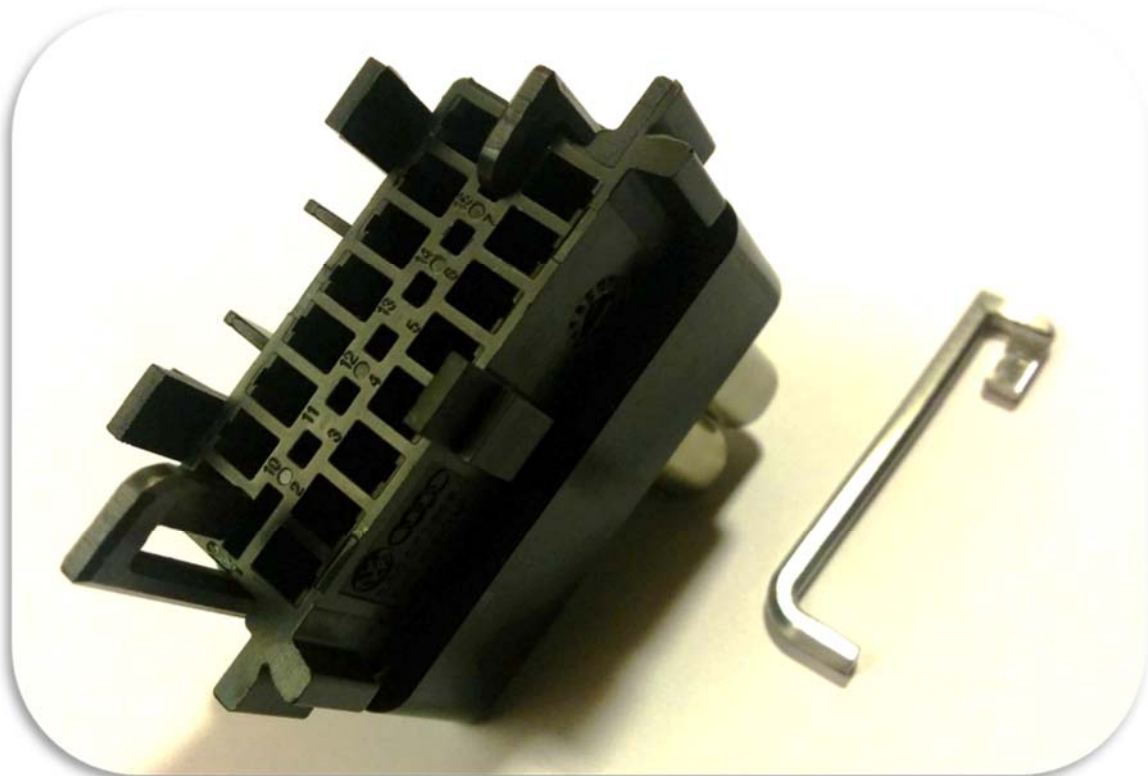
## Mounting tip

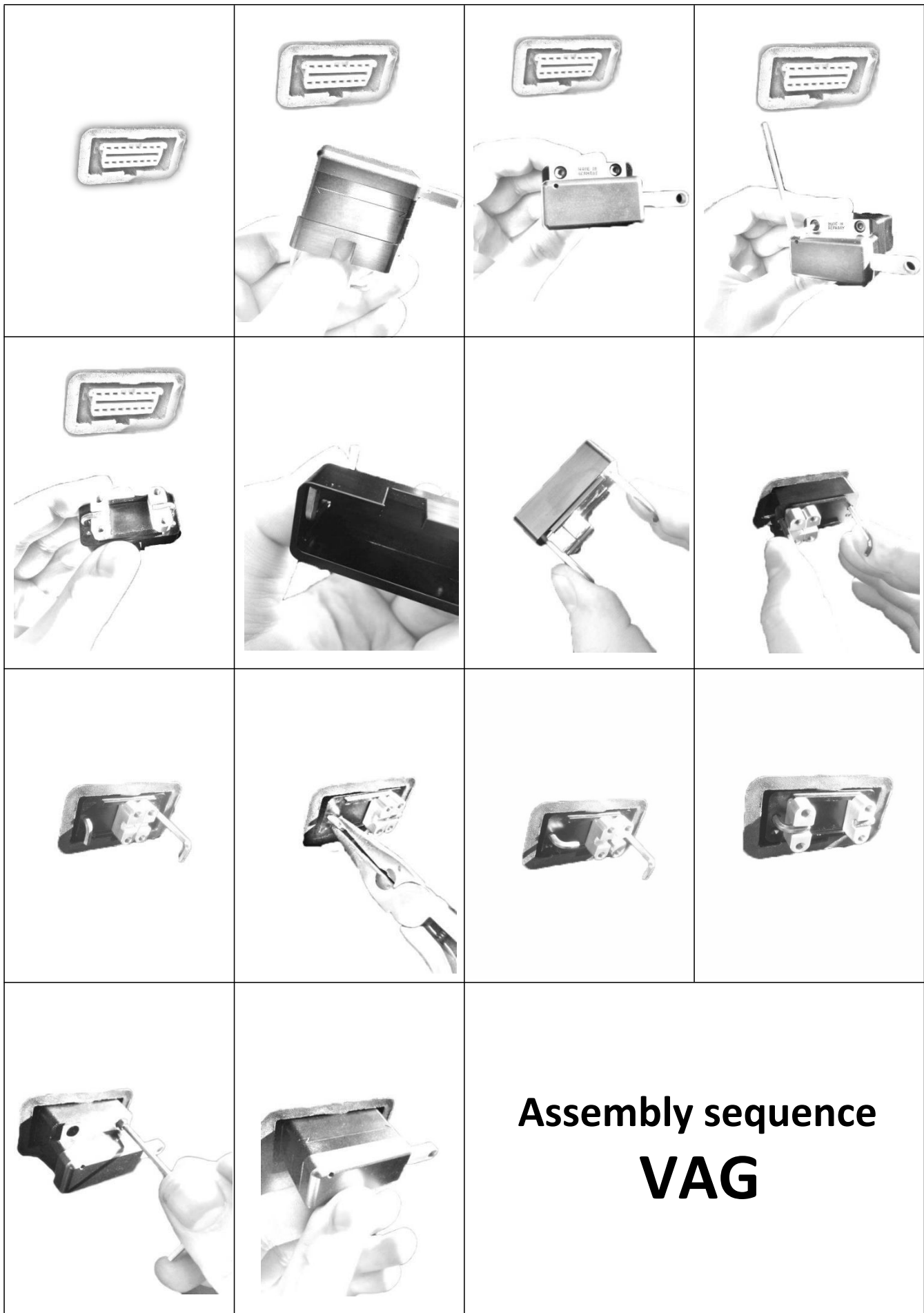
If you mount the lower part of the OBD Saver VAG as in the picture, you will no longer fall out the sliding pieces and the hooks.



If you have trouble turning or pulling the hooks have, then try the problematic hook (usually the right) around 270 ° rotating instead of 90 °.

We recommend for assembly or alignment of the hook a small pair of pliers.





**Assembly sequence**  
**VAG**

## Adjustment of the mounting bracket Porsche Porsche 911-996-997; Cayman; Panamera

 A black plastic mounting bracket with a pink OBD socket jack inserted into it. The jack has several pins protruding from its top.	<ul style="list-style-type: none"><li>• Original</li></ul>
 The black plastic mounting bracket is shown without the OBD socket jack. The jack is placed to the right of the bracket for comparison.	<ul style="list-style-type: none"><li>• OBD-socket jack removed from mounting bracket</li></ul>
 The black plastic mounting bracket is shown from the inside. Two white arrows point to the inner edges of the bracket, indicating where to cut.	<ul style="list-style-type: none"><li>• Cut the marked edges</li><li>• We suggest dremel tools</li></ul>
 The black plastic mounting bracket is shown with the pink OBD socket jack inserted. The jack is now seated more snugly within the modified bracket.	<ul style="list-style-type: none"><li>• Modified mounting bracket with socket jack</li></ul>
 A black plastic OBD-Saver device is shown inserted into the modified mounting bracket. The device fits snugly within the bracket.	<p>OBD-Saver now fits into the bracket</p>